



Sew Bernina

January 2023



Your local authorized BERNINA & HandiQuilter Dealer in Central Alabama

51 N Burbank Dr, Montgomery

Phone: 334-274-0887



Sew What's Up?

2023

Happy New Year! Everyone at Sew BERNINA is looking forward to serving you in 2023 as your local BERNINA & HandiQuilter dealer.

We've scheduled a few classes already and hope you've made plans to attend one or two or more with friends! We're ready for Mastery classes for our new machine owners starting in January, and we'll kick off a few new Blocks of The Month early in the year. . . look for details in the class section of our newsletters.

We are thankful for your business and so blessed that you come see us for your machine & quilting needs.

BERNINA Specials

BUY ONE OF THESE

~~\$2,935~~ **\$2,199**
bernette 79
Sewing & Embroidery



~~\$2,269~~ **\$1,699**
bernette 70 DECO
Embroidery Only



and receive **FREE** BERNINA Embroidery V9 Creator Software

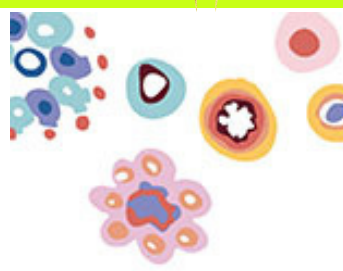
JANUARY 1-31, 2023

*Offer valid January 1-31, 2023 at any participating BERNINA/Bernette Store in the United States of America. Offer applies only to the purchase of new Bernette 70 or 79 sewing/embroidery machine. Offer may not be combined or replaced with any other BERNINA/Bernette promotional offers, rebates, coupons or discounts. Not valid on previous purchases. Taxes are not included in the total purchase calculation. Available while supplies last. Offer and its terms are subject to change. Offer available at participating BERNINA/Bernette Dealers only. BERNINA of America, LLC reserves the right to extend, modify, eliminate, or reduce this offer without prior notice. © 2022 BERNINA. All rights reserved.

\$1,199 Value!

bernette SWISS DESIGN

- Newsletter Highlights
- SEW WHAT'S UP?
- BERNINA SPECIALS
- HANDIQUILTER SPECIALS
- CLASSES
- BECAUSE YOU SHOULD KNOW -- TECH TIPS



Reserve yours today!

NEW BERNINA 475 QE Kaffe Edition



b05 CRAFTER ~~\$465~~ **\$349**



INCLUDES 9 PRESSER FEET!

b05 ACADEMY ~~\$535~~ **\$399**

b35 ~~\$399~~ **\$299**



INCLUDES 10 PRESSER FEET!

b38 ~~\$935~~ **\$699**



INCLUDES 10 PRESSER FEET!

Receive a FREE bernette Presser Foot Set with select bernette machines!*

JANUARY 1-31, 2023

*Offer valid January 1-31, 2023, at any participating BERNINA/Bernette Store in the United States of America. Offer applies only to the purchase of new Bernette b05 ACADEMY, b05 CRAFTER, b35, or b38 sewing machine. Offer may not be combined or replaced with any other BERNINA/Bernette promotional offers, rebates, coupons or discounts. Not valid on previous purchases. Taxes are not included in the total purchase calculation. Available while supplies last. Offer and its terms are subject to change. Offer available at participating BERNINA/Bernette Dealers only. BERNINA of America, LLC reserves the right to extend, modify, eliminate, or reduce this offer without prior notice. © 2022 BERNINA. All rights reserved.



BERNINA

HandiQuilter Specials



HandiQuilter JANUARY 1 - JANUARY 24, 2023

2023
NEW YEAR SAVINGS*

FOR ONLY \$20.23
QUILTERS CAN CHOOSE ONE OF THE FOLLOWING:
Shipping for your new Handi Quilter Longarm Quilting Machine for just \$20.23 (Up to \$600 off!)

 AMARA21	 MOXIE	 AMARA20	 AMARA24
 INFINITY26	 Pro-Sitcher LITE	 Pro-Sitcher	

Electromagnetic Channel Locks NOW \$20.23 (MSRP \$1,050)
HQ High-Light kits NOW \$20.23 (MSRP \$275)
HQ Little Buddy NOW \$20.23 (MSRP \$495)
My Secret Drawer NOW \$20.23 (MSRP \$250)

*Promotion dates are January 1, 2023 through January 24, 2023 only. New machine orders must be placed on or before January 24, 2023 and must ship by January 31, 2023. Discounts available for new orders only. Prices and availability may vary by retailer. Contact your local retailer for participation details. May not be combined with any other offers, discounts, or promotions. Some consumers may receive products after the promotion period ends. Offer available at participating U.S. retailers in the contiguous 48 states only. Electromagnetic Channel Locks are for Studio2 and Gallery frames. HQ Little Buddy is for the HQ Little Foot Frame.

HandiQuilter www.HandiQuilter.com • 1-877-MY-QUILT (697-8458) FIND US ONLINE:   

Are you on Facebook?

Every Tuesday at 1 CST (1200 MST)

HandiQuilter hosts a Watch and Learn Quilting Show where HQ educators share tips, tricks, and tutorials on HQ products, offer limited-time-only special pricing, and even include exclusive giveaways.

Classes

See sample photos at end of newsletter

Runner's Club

Love to take a class, but don't want to commit to a big quilt? Gayla's table runner classes are the answer! These are Saturday classes and they fill up fast. Teacher: Gayla B. Cost: \$40 + supplies Times: (Saturdays) 10:00 - 2:30 pm

Mansfield

Date: 14 Jan

Mystery Quilt

You must sign up 2 weeks prior to the class so Sandy has time to prepare your materials. All classes are on Saturdays from 9:30 am - 2:30 pm. Each date listed is a separate class and a new mystery pattern.

Teacher: Sandy H. Cost: \$50 for each class + supplies

Remaining Date(s): 7 or 9 Jan 2023 (Saturday OR Monday), 4 or 6 Feb, 4 or 6 Mar, 1 or 3 Apr, 6 or 8 May, 3 or 5 Jun

Brown Bag Club

The current Brown Bag Club meets the second Monday of every month from 12-1pm. The current project is "Toes in the Sand" by Jay Bird Quilts. This is a lecture and show-and-tell class only.

Remaining Classes: 16 Jan, 13 Feb Teacher: Paula M. Cost: One-time sign up fee of \$10 + supplies.

Rise and Shine Sew Along -- Kits SOLD OUT-- call to be put on wait list for KIT

Dates: 18 Jan (Wednesday) 9:30-12:00 Teacher: Paula M. Cost: FREE class with purchase of kit

Block of the Month 2022 -- TULA Butterfly quilt will run thru March 2023

We will be making this sampler quilt as a block of the month class, typically on a Friday from 9:30-12:00. Each month we will be making a set of blocks in a multitude of colors to complete this amazing rainbow quilt pattern. Come see the stunning sample in the classroom.

Remaining Date(s): 13 Jan, 10 Feb, 10 Mar Teacher: Paula M. Cost: \$20 each class date + supplies

Vintage

This quilt is a variation of the traditional tumbler block and comes together quickly using the Quick Straight Ruler by Sew Kind of Wonderful. An assortment of bright colors surrounded by creamy neutrals makes this an attractive quilt for any decor. The shop sample is simply beautiful!

Dates: 21 Jan (Saturday) 9:30-2:30 Teacher: Kim B. Cost: \$50 + supplies

Take a Stand

Take a Stand is a companion project to December's class, Running with Scissors. Available to make in Large or Small size, it has an easy to install zippered top that opens wide for easy access. Inner and outer pockets makes this a great travel sewing tote.

Date: 30 Jan 10:00-3:00 (we will break for lunch) Teacher: Kim B. Cost: \$40 + supplies

Quilt Piecing 201 (5 classes) "Little Miss Sawtooth"

This fun project will increase your piecing and pattern reading skills. Eighteen different blocks will showcase a different center inside a star. These 18 blocks will be offset by simple 4-patches. The scrappiness of this quilts lends well to using your stash and adding fabric as you go! *Must attend Quilt Piecing 101 prior to this class.

Dates: 18, 25 Jan, 1, 8, 15 Feb Teacher: Nancy P. Cost: \$130 + supplies

Portable Design Board

In this quick 2-hr class we'll assemble a portable design board covered in batting and edged with binding. These boards are handy for moving a multi-piece block from your sewing area to your ironing station (where most mismatching of piecing occurs). Guarantee you'll want to make more than one!

Date: 17 Jan (10:00 - 12:00) Teacher: Chrissy W. Cost: \$30 includes supplies! (board, batting, binding)

Meadow (5 classes) -- CURRENTLY FULL. . . call to be put on the waiting list

Explore the many ways of creating applique in this gorgeous flowerful quilt. Paula & Chrissy will demonstrate several methods of both hand & machine applique. The quilt is brought together with oodles of half-square triangles. Of course the girls will demonstrate various ways of creating half-square triangle blocks that will make you LOVE creating them!

Dates: 25 Jan, 22 Feb, 22 Mar, 26 Apr, 24 May (9:30 - 12:00) Teacher(s) : Paula M./Chrissy W. Cost: \$25 per class + supplies

English Paper Piecing Primer (3 classes)

In preparation for the upcoming Queen of Diamonds class, Chrissy is offering a primer class on EPP shapes other than the traditional hexagon. It's easy when all the fabric folds nicely behind the paper piece, but what about those dog ears that stick out on triangles & half-hexis? Take one or all three primer classes to perfect your methods!

Dates: 21, 28 Jun, 5 Jul (9:30-11:30) Teacher: Chrissy W. Cost: \$25 per class (includes papers & fabric) + supplies

Queen of Diamonds BOM (12 classes) . . .PURCHASE THE KIT & GET THE CLASS FREE!

We have a limited number of kits available for this Tula Pink Block of the Month/Sew Along. This monthly class will start in July 2023 and includes both EPP & machine piecing. This amazing opportunity includes monthly EPP tutorial videos, an exclusive Facebook group, and of course, time with your favorite instructors here at the shop! You do not need to attend class to purchase a kit, but we'd love it if you did.

Dates: Wednesdays - 19 Jul, 16 Aug, 20 Sep, 18 Oct, 15 Nov, 20 Dec 2023

Instructor: Paula M.

Cost of Kit: TBD

GE Designs Series

Nancy P. has more GE Design quilts scheduled for 2023! Gudrun Erla of GE Designs developed the Stripology Rulers for Creative Grids which streamline fabric cutting for more intricate looking layouts. The upcoming quilt sample is hanging in our classroom. All classes meet on a Saturday from 10:00-2:30pm \$45 per class + supplies

Crystal

Date: 18 Feb

Elvira

Date: 22 Apr

Bellatrix

Date: 22 Jul

because you should know

Is my Singer a Featherweight? If you were with us at the Fair in Oct, you heard the announcement that we now service Singer Featherweight machines. This is a very specific, mechanical model made between 1933 and 1961 in the United States, Canada, or Scotland. The Featherweights have small extension tables that fold up towards the head of the machine when not in use, a very distinguishing feature of the FW. Did you know not all Featherweights are black? As of late, you may see a Featherweight painted in any color of the rainbow by ambitious owners looking to spruce up an old, worn machine, but originally they were painted by Singer in only three colors: black, whitish/green, and tan.



The Fine Print . . .
Class Policies - Your space is reserved when the class fee is paid in full. We must have three students for a class to meet. A refund will be issued to students signing up for a class that doesn't meet the minimum number. If you need to cancel, you must cancel at least one week prior to class to receive a refund. Supplies are not included in the class fee unless otherwise noted. A class supply list will be provided when a student registers. Please turn off cell phones during class. All machine classes require a machine in good working order complete with any essential accessories annotated on the supply list.